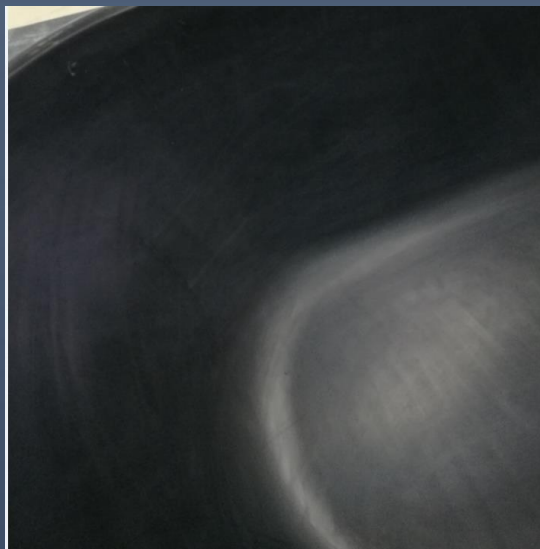


All our baths are made by aluminium powder mould, which has better anti-wear, smoother surface quality. Hence, our baths surface is smooth and shiny, eliminating any possible unevenness during thermoforming process.



Previous Fiberglass and Resin mould



Now aluminium powder mould



Our tubs are all made of LUCITE PMMA sanitary grade cross-linked acrylic sheet, so the bathtubs are glossy and durable.



Our tubs are reinforced by resin that is custom-made by resin supplier to perfectly match our acrylic sheet, which provides better adhesion to our acrylic sheets, and hence a bigger loading strength and impact strength on our tubs. Furthermore, we use full-length base board underneath the bathtub, which provides more strength to support the bathtub.

Meanwhile, we use thick acrylic sheet and enough fiberglass, resin material to ensure a wall thickness of 5-6mm.

Overall, our bathtub can take as much load as 500 KGS.

Full-length 12mm baseboard underneath the bathtub bottom



Withstand 500KGS load test, no cracking sound with this weight.





For rectangle or back-to-wall or any straight baths, we use 9mm plywood board to strengthen the panel so the wall is straight, our tolerance on straightness is $\leq 2\text{mm}$ for a 1700mm bathtub.



vivo X80 · ZEISS
2023/01/06 14:41

Slim-rim Construction – Modern Minimalism

Our bathtubs are all designed following the trendy European designs. We are one of the earliest factories to adopt 25/30mm slim edged designs. Now we even go 20mm, some special designs are only 10mm. Being slim will better match with the trendy European branded basins, toilets or taps so to offer a complete modern premium bathroom solution for our clients.



25mm rim



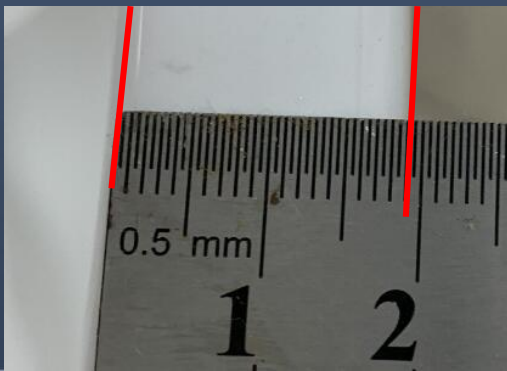
20mm rim



10mm rim

Benefits of slim-rim design:

- Slimmer rim will make the bathtub look nicer overall.
- Slimmer rim provides larger internal bathing space, so even a smaller bathtub will be big enough for people to immerse themselves.
- Slim rim are popular, trendy as nowadays people have smaller bathrooms.



Integral Overflow Channel – Modern Minimalism

Our bathtubs are with integral (built-in) overflow channel.

1. A simple clean look even underneath our bathtub
2. Maintenance-free. This built-in overflow channel is fully covered and sealed by fiberglass and resin, so it has same longevity with the bathtub itself.

Integral overflow channel



Our bathtubs are supported with TWO solid steel bars, and FOUR adjustable leg system, which is strong in support and convenient in make adjustment during installation. Simple & Strong!

OUR TUB LEGS



COMPETITOR'S TUB LEGS



Summar

OUR TUB	COMPETITOR TUB
Solid steel bar, more sturdy support	Square steel support
Steel bars are fixed with resin and fiberglass, anti-wear and sturdy	Steel bars are fixed on the tub by screws, screws might get rusted and broken.
Only 4 adjustable legs, easier for levelling	6 or more numbers of adjustable legs, difficult to make levelling

No crack around join line (this is for your internal training only) – Good Surface Quality, Durable.

Our bathtubs will not change or crack over a long period of time, while on some competitor's bathtub, the join line is obvious. Also, the paint we use is the closest to the acrylic colour, so the colour difference is not noticeable.

So all our freestanding bathtubs look like one-piece structure, no noticeable joint & colour difference!

Our bathtub tested from 2010, no change till today



Competitor's bathtub tested from 2010, crack on the joined area.



